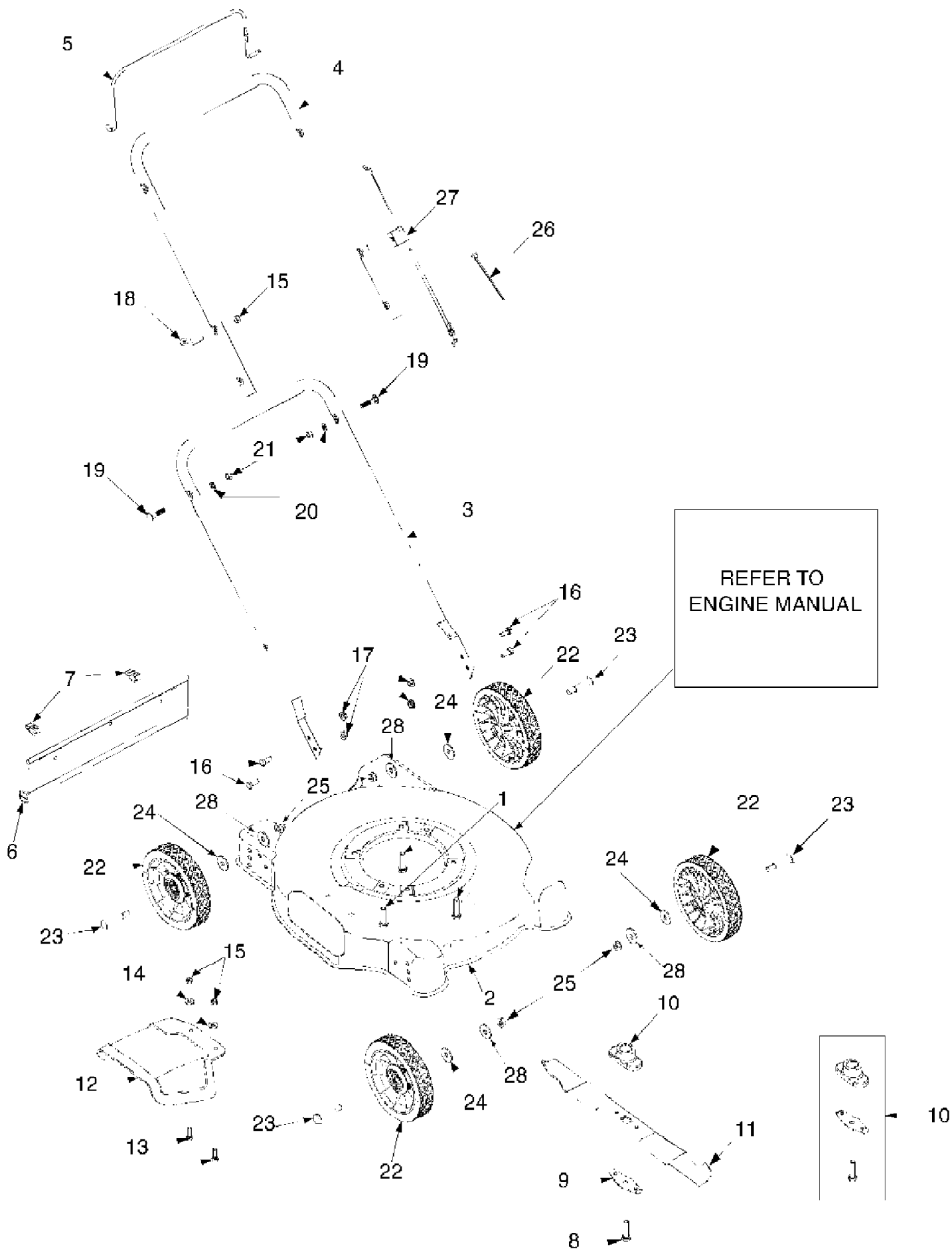


11A-021C190 20" SD (Push) (1998)  
Upper And Lower Handle Assembly



11A-021C190 20" SD (Push) (1998)  
Upper And Lower Handle Assembly

Page 2 of 2

Ref #	Part Number	Qty	S/P/F	Description
1	710-0654A	1	/P	Hex Screw w/LWsh. 3/8-16 x 1.0" Lg.
2	782-0048	1		Deck - 20"
3	749-1077	1	S	Lower Handle
4	749-1076	1	S	Upper Handle
5	747-0976	1	S	Bail
6	731-0872A	1	S	Trail Shield
7	17098	1	S	Hinge Clip
8	710-1044	1	/P	Screw 3/8-24 x 1.5" Lg. - Gr8
9	736-0524A	1	S	Support: Blade Bell
10	753-0588	1	S	Blade Adapter Kit (Incl. Ref. 8 & 9)
11	742-0640	1	S	Blade
12	731-0064	1		Discharge Chute
13	710-0932	1	/P	Carriage Screw 1/4-20 x 1.0" Lg.
14	736-0173	1	/P	Flat Washer .28" ID x .74" OD
15	712-0324	1	/P	Lock Nut 1/4-20 Thd.
16	710-3008	1	/P	Hex Screw 5/16-18 x .75" Lg.
17	712-3004A	1	/P	Lock Nut 5/16-18 Thd.
18	710-1205	1	/P	Eye Bolt 1/4-20
19	710-0262	1	/P	Carriage Bolt 5/16-18 x 1.5" Lg.
20	736-0119	1	S	Lock Washer 5/16
21	712-0267	1	S	Nut 5/16-18 Thd.
22	734-1779	1	S	Wheel 7 x 1.5" Star Diamond Trd. Wht
23	738-0533	1	S	Shoulder Screw .498" x 1.635"
24	736-0105	1	/P	Bell Washer .401" ID x .87" OD
25	712-0798	1	/P	Fl. Lock Nut 3/8-16 Thd.
26	726-0240	1	S	Cable Tie
27	746-0946	1	S	Control Cable
28	736-0331	1	/P	Bell Washer .39" ID x 1.13" OD